

Regional labour force – Cairns SA4, Apr 24

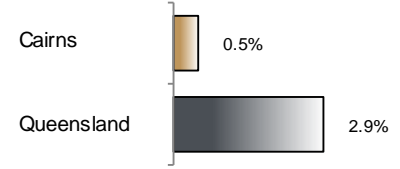
Source: ABS, *Labour force, Australia, detailed*, released 23 May 2024, 11:30 am (AEST)

Table 1 Labour force status, Cairns SA4

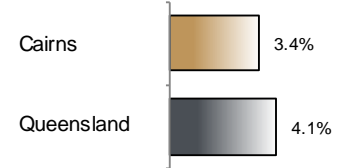
	Year ending			Annual change	
	Apr 23	Mar 24	Apr 24	persons	%
	— persons —			persons	%
Total employed	141,500	141,200	142,100	700	0.5
Total unemployed	5,900	4,800	4,900	-1,000	-16.7
Total labour force	147,400	146,000	147,100	-300	-0.2
Not in the labour force	66,300	73,000	72,400	6,000	9.1
Total persons 15+	213,700	219,000	219,500	5,700	2.7
Participation rate (%)	69.0	66.7	67.0	..	-1.9 (a)
Unemployment rate (%)	4.0	3.3	3.4	..	-0.7 (a)

(a) Percentage point change.

Employment growth, annual



Unemployment rate



Key data

Employment (annual change)..... ↑ 0.5%
 Unemployment rate 3.4%
 Unemployment rate (annual change) ↓ 0.7 ppt
 Participation rate..... 67.0%

ppt = percentage point

Main findings

Note: Due to the high standard errors associated with regional labour force direct survey estimates, the ABS and QGSO recommend using 12-month averages to reduce the volatility of the underlying original data.

All data in this brief are based on 12-month moving averages of direct survey estimates.

- The number of employed persons in Cairns SA4 in April 2024 was 142,100 persons, an increase of 700 employed persons, or 0.5% over the year (Figure 1).
- The unemployment rate in Cairns SA4 in April 2024 was 3.4 per cent, a decrease of 0.7 percentage point over the year. The unemployment rate for this area was the third-lowest of all 19 SA4s within Queensland (Figure 2).
- The participation rate in Cairns SA4 in April 2024 was 67.0 per cent, a decrease of 1.9 percentage points over the year (Table 1).

SA4 = Statistical Area Level 4 (ASGS 2016 edition)

Notes (refer to website for more detailed notes):

Data for Queensland as a whole are provided for reference purposes only.

The labour force statistics presented in this brief are on a sample basis and will include a sampling error.

Totals may differ due to rounding. Figures are rounded to nearest 100 persons. Calculations are based on pre-rounded figures.

Figure 1 Annual change in employment, Cairns SA4

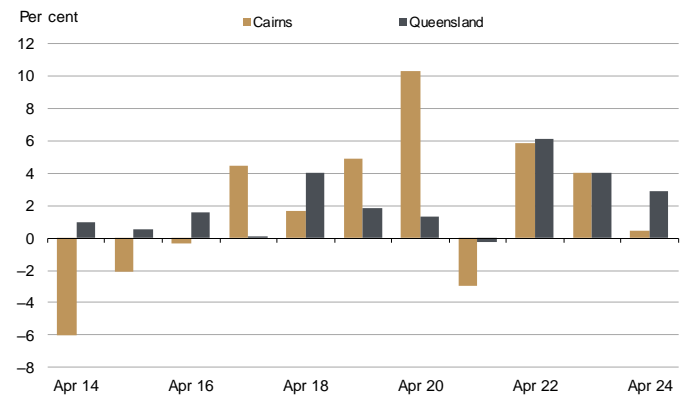


Figure 2 Unemployment rate by SA4, April 2024

